



HB311 - Committee to Study Rail Trail Best Management Practices

NH Department of Environmental Services
Waste Management Division
January 24, 2022



Focus of presentation

- a) Residual contamination from railroad operations.
- b) Contamination from other sources.
- c) Identifying areas of contamination concerns.

Touch on...

- d) Establishing goals of best management practices.

a) Residual contamination from railroad operations

- Railroad ties
 - Wood preservatives
- Impacted ballast/soils
 - Oil drippings
 - Fuels, lubricants
 - Coal ash/clinkers
 - Polycyclic aromatic hydrocarbons (PAHs), metals, pesticides/herbicides





Oil drippings (spill?)



Coal ash/clinkers

b) Contamination from other sources

- Spills
- Loading and off-loading areas
- Adjacent contaminated properties



c) Identifying areas of contamination concern

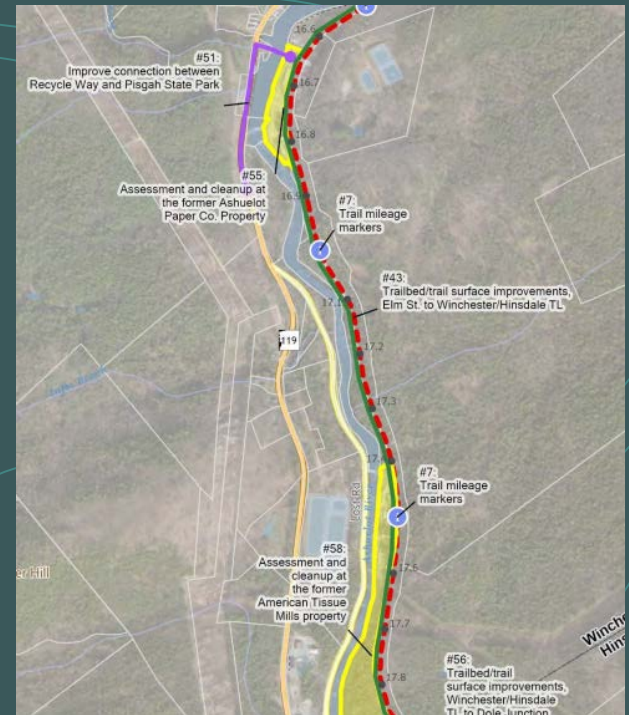
- Phase I Environmental Site Assessment (ESA)
 - Recognized Environmental Conditions (RECs)
- NHDES' OneStop Database

OneStop Navigation

Searching OneStop

Explore the many documents, permits, data and reports on our OneStop database.

NHDES ONESTOP



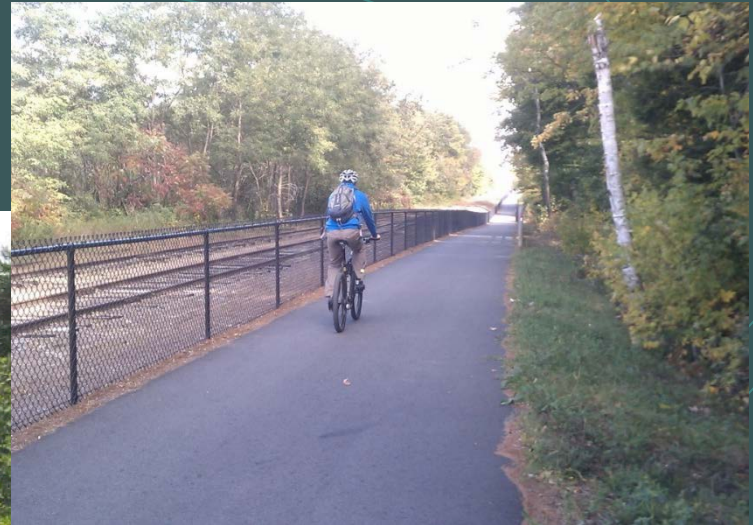
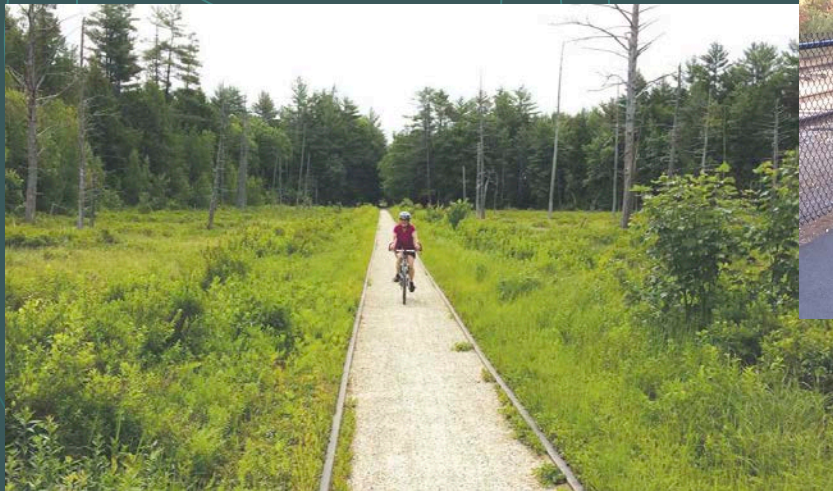
A vertical strip on the left side of the slide shows a topographic map with contour lines, a yellow line, and a white circle with an arrow pointing to the right.

NHDES Waste Management Division's current involvement

- Not much since the contamination in railroad corridors is often viewed as "background"
- We get involved...
 - If asked, provide guidance/recommendations
 - Contamination other than background

d) Establishing goals of best management practices

- Enlist assistance of other stakeholders and experts [including for Ch. 94:4, III. (e) through (k)]
- Look to other states
- Brownfields assistance?





NHDES Waste Management Division Contact Information

Michael McCluskey, P.E.
Hazardous Waste Remediation Bureau
(603) 271-2183

Michael.G.McCluskey@des.nh.gov

Erik Paddleford
Oil Remediation & Compliance Bureau
(603) 271-3431

Erik.H.Paddleford@des.nh.gov